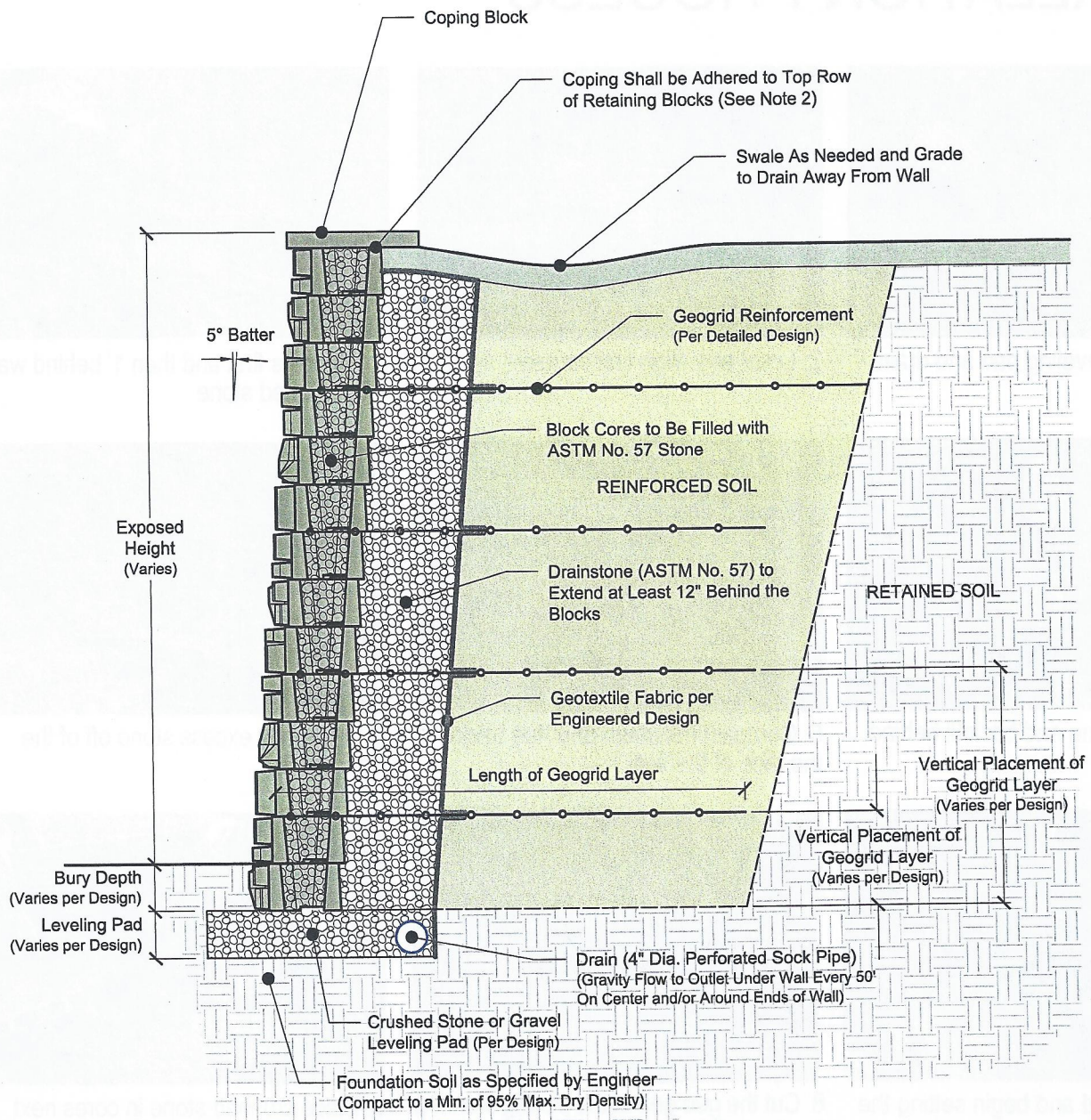


# INSTALLATION DETAILS

# INSTALLATION DETAILS



**TYPICAL RETAINING WALL SECTION**  
(No Scale)

**NOTES:**

1. Block setback = 1/2" per course = 5° batter
2. Construction adhesives shall be specifically formulated for segmental block wall construction and shall be installed according to the manufacturer's recommendations.
3. This drawing is for reference only.
4. Final designs for construction must be prepared by a registered Professional Engineer using the actual conditions of the proposed site.
5. Final wall design must address both internal and external drainage and shall be evaluated by the Professional Engineer who is responsible for the wall design.
6. Blocks are produced with different face textures. Exposed block faces will vary throughout the wall depending on installation pattern.

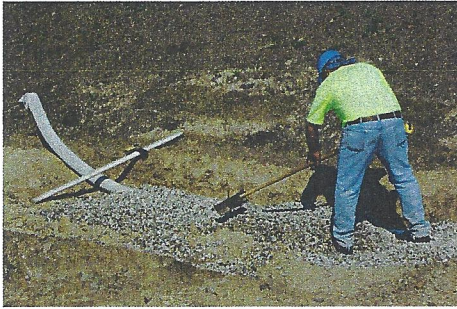
DRAWN BY: J. Johnson
APPROVED BY:
DATE: 02-17-10
SHEET NO. : 1 of 1

TITLE: <b>TYPICAL WALL SECTION</b> <b>115 RETAINING</b>
DRAWING FILE: RS 115 Typical Wall Section and Installation 021710.dwg

**REDI-SCAPES**

05481 US 31 SOUTH CHARLEVOIX, MI 49720  
866-222-8400 • 231-237-9521 Fax • [www.redi-scapes.com](http://www.redi-scapes.com)

# INSTALLATION PROCESS



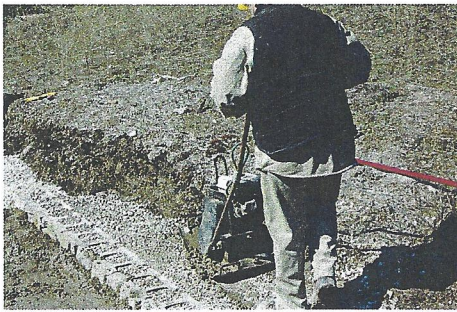
1. Place stone leveling pad and drain per design.



2. Level and align first course.



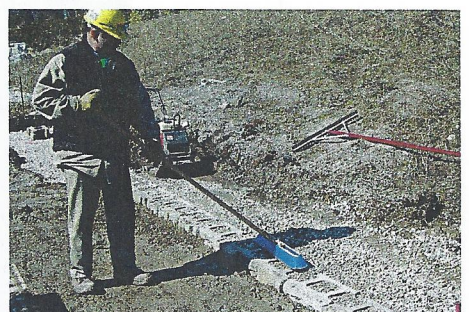
3. Fill cores first and then 1' behind wall with crushed stone



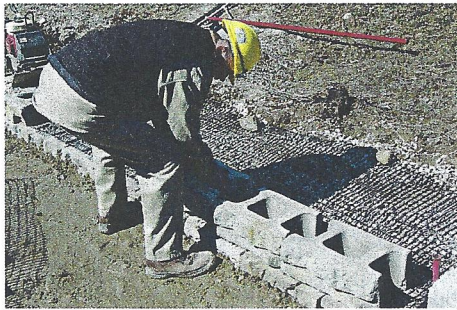
4. Compact stone and backfill behind the wall



5. Compact minimum of 6" toe backfill at the face of the wall.



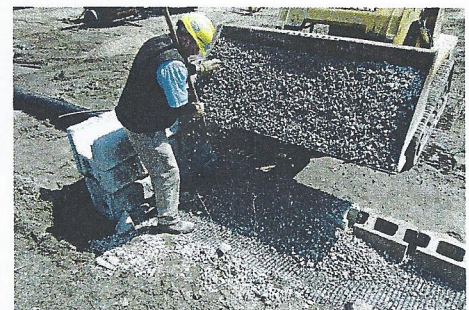
6. Clean any excess stone off of the first course.



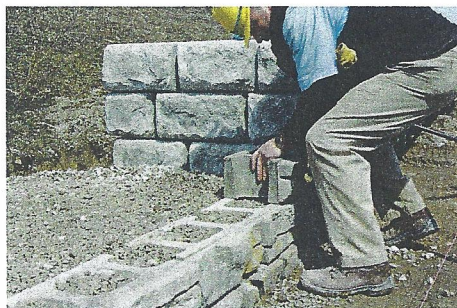
7. Place geo grid and begin setting the next course of block.



8. Cut the geo grid at the parting line near the face of the block for curved walls.



9. Place crushed stone in cores next and then cover geo grid in 6" lifts.



10. Repeat adding courses of block per engineered wall design.



11. Trim blocks as required and remove knobs on top course to prepare for coping or Freestanding Block.

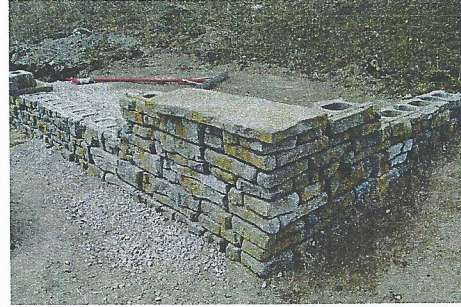


12. Back fill as required

# INSTALLATION PROCESS (cont.)



13. Clean block and apply optional adhesive for Copings. If Freestanding courses are to be placed on top of wall, connect to Retaining blocks per design details.



14. Finish wall with Freestanding Blocks and coping per design.

## FINISHED PROJECT



# INSTALLATION PROCESS (cont.)



14. Finish wall with Finishing Block.



15. Glue block and apply optional water size for coating. If resurfacing courses are to be placed on top of wall, connect to Finishing Block per design details.

## FINISHED PROJECT

